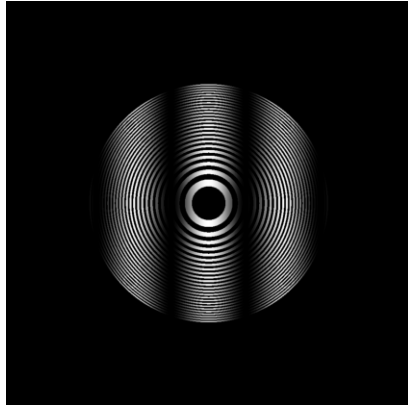
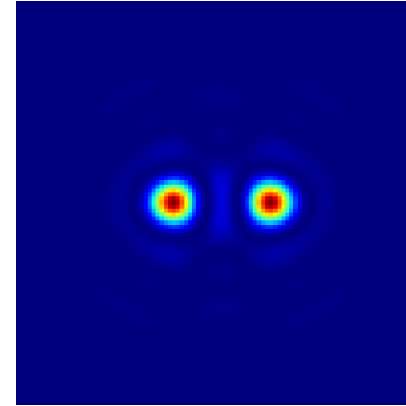


input intensity



output intensity



LightPipes for Python

Test-ZonePlate.py

size = 12.00 mm

$\lambda = 5.00 \mu\text{m}$

N = 1000

f = 50.00 mm focal length of the zone plate

p = 80.00 mm distance from object

q = 133.33 mm distance to screen

dx = 0.09 mm distance between the point sources

w = 35.55 μm size of the outermost ring

number of zones = 50

Transmission = 1.00

Pass even zones: True

