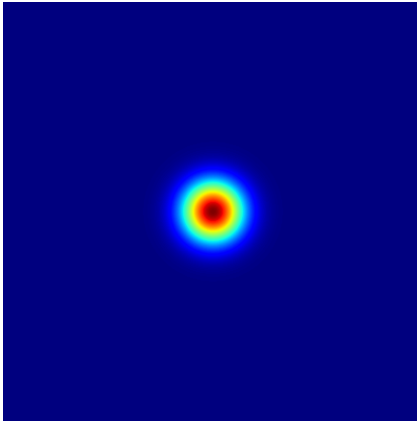
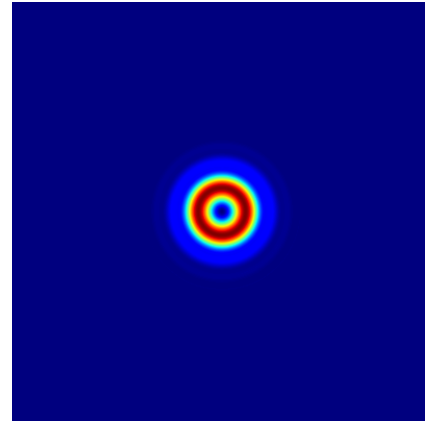


Gauss beam transformation to doughnut with spiral phase plate

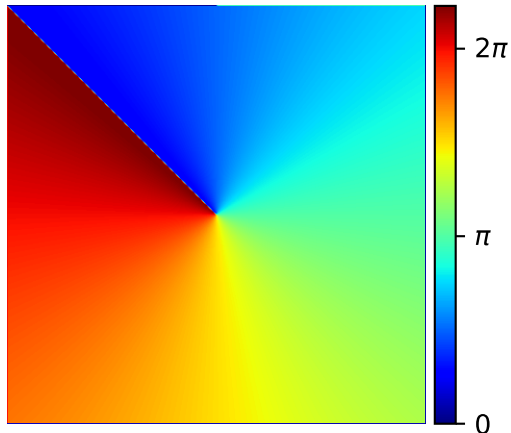
intensity at $z = 0$ cm



intensity at $z = 100.0$ cm



phase distribution of the spiral phase plate
with order 1



LightPipes for Python,
Spiral_phase_plate.py

$\lambda = 500.00$ nm
 $size = 10.00$ mm
 $N = 501$
 $w_0 = 1.00$ mm
 $z = 100.00$ cm
 $order = 1$

© Fred van Goor, May 2020